

FLOOR PLANS



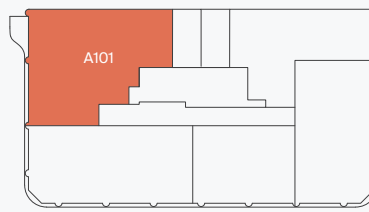
W1 PLACE

LONDON

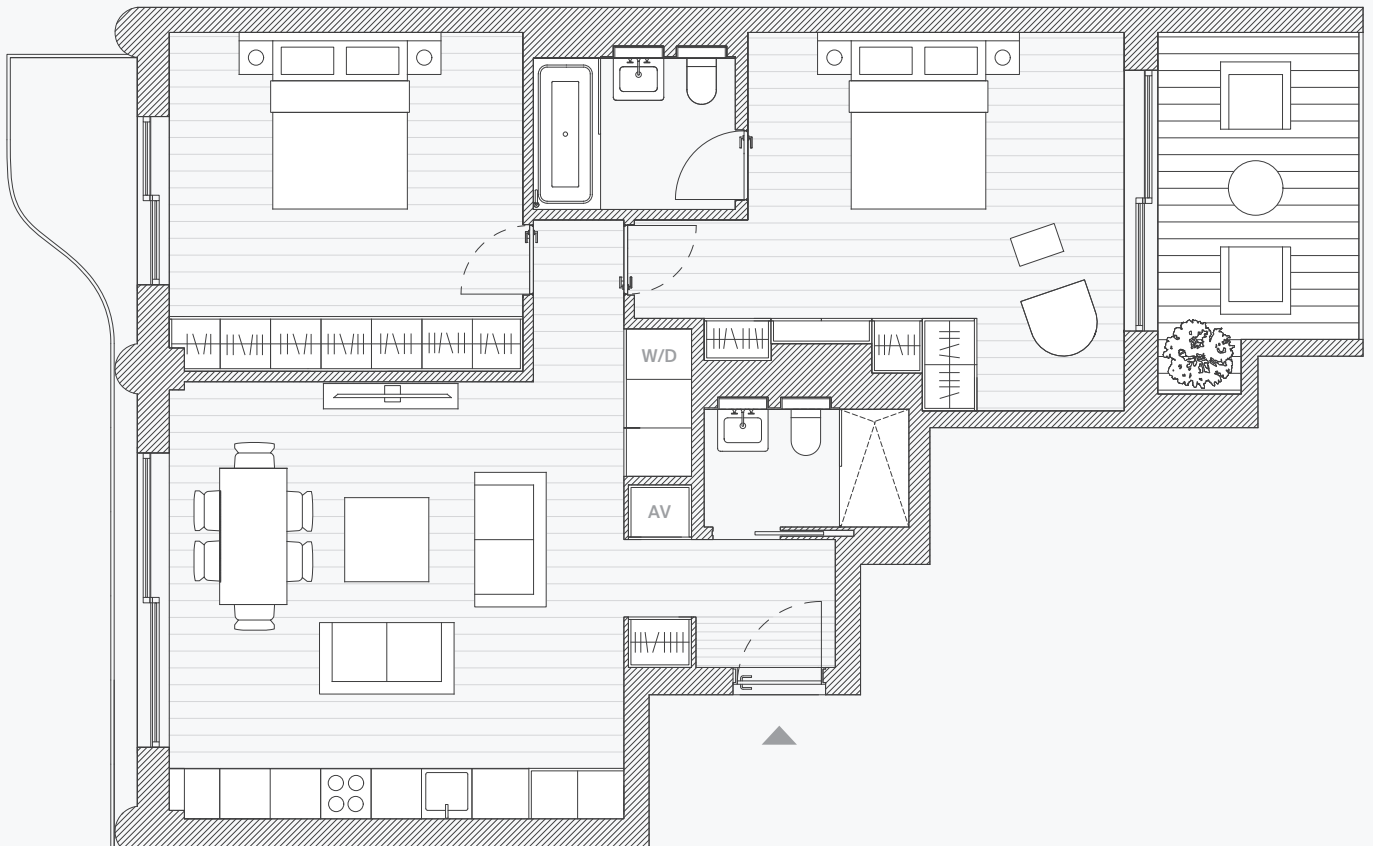
Apartment A101 2 bedroom



First floor

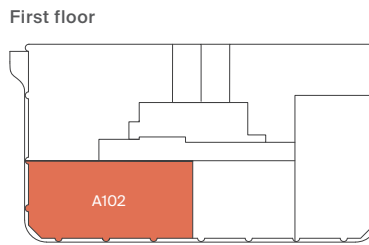


Living/Kitchen/Dining	5.4m x 5.2m
Master Bedroom	5.8m x 4.5m
Master Bathroom	2.4m x 1.8m
Bedroom 2	4.2m x 4.0m
Guest Bathroom	2.4m x 1.4m
Total	89m ²
	958sqft
Terrace	9.4m ²
	101sqft

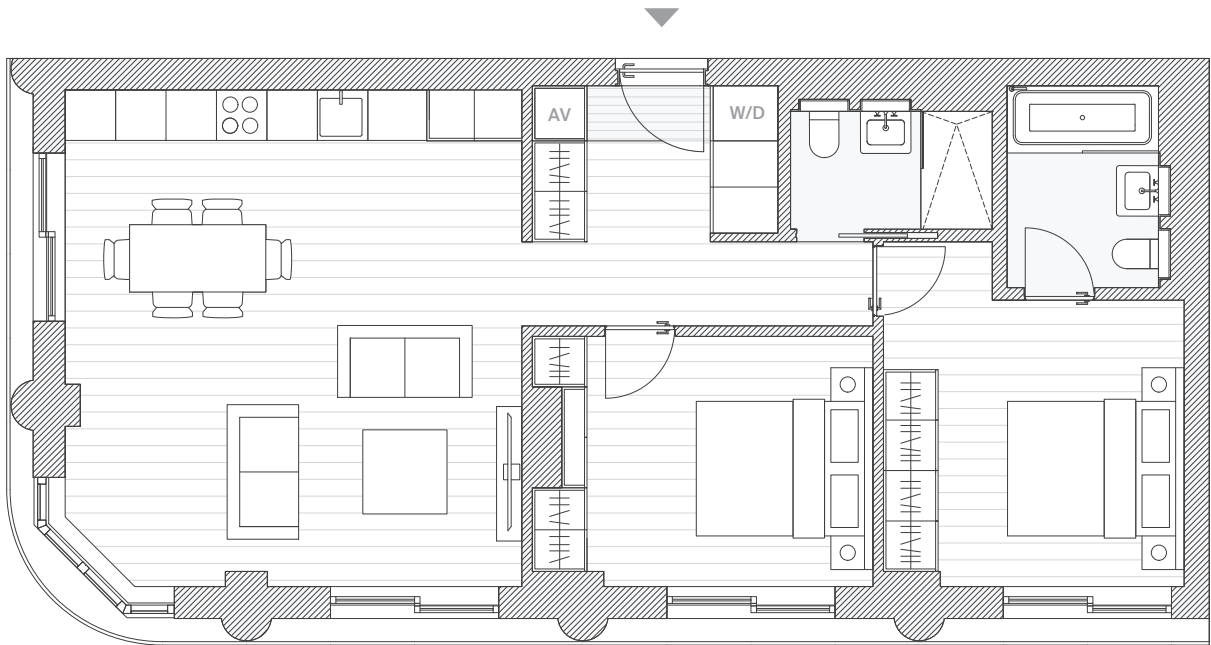


Apartment A102

2 bedroom



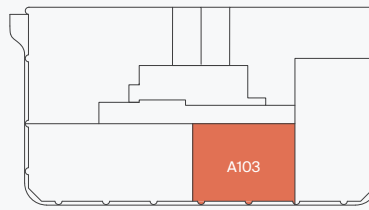
Living/Kitchen/Dining	5.9m x 5.4m
Master Bedroom	4.1m x 3.6m
Master Bathroom	2.4m x 1.8m
Bedroom 2	4.1m x 3.0m
Guest Bathroom	2.4m x 1.4m
Total	80.6m²
	868sqft



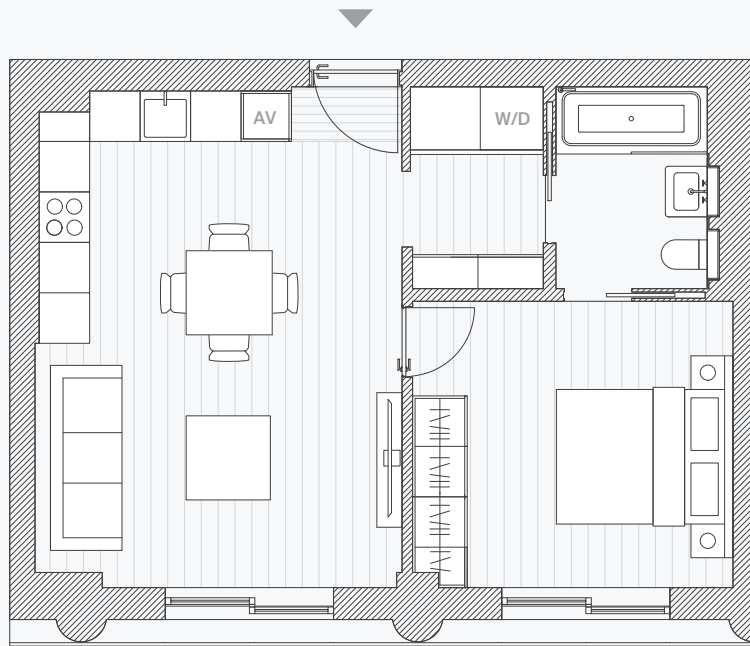
Apartment A103 1 bedroom



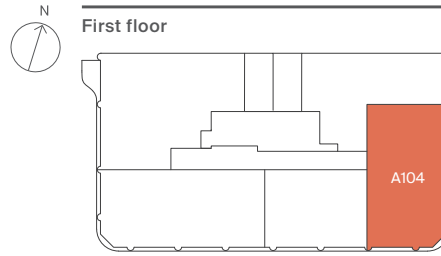
First floor



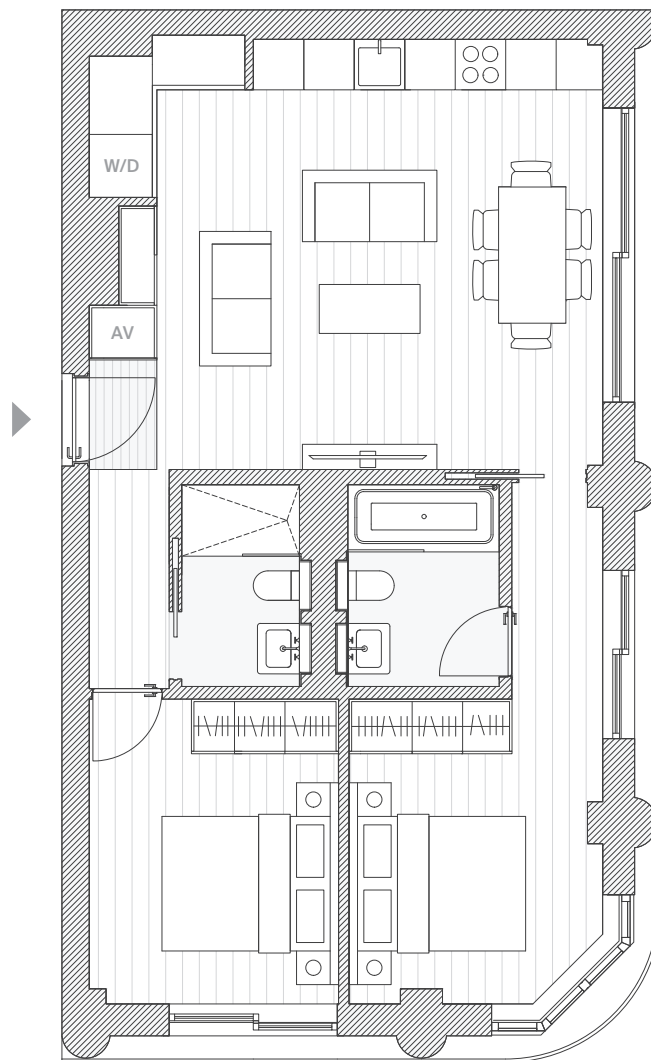
Living/Kitchen/Dining	5.9m x 4.4m
Master Bedroom	3.8m x 3.4m
Guest/Master Bathroom	2.4m x 1.8m
Total	50m²
	532sqft



Apartment A104 2 bedroom



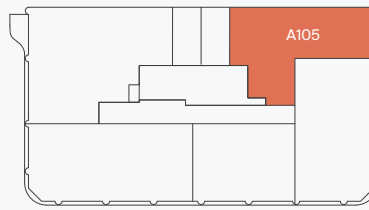
Living/Kitchen/Dining	6.1m x 5.1m
Master Bedroom	6.2m x 3.0m
Master Bathroom	2.4m x 1.8m
Bedroom 2	4.0m x 3.0m
Guest Bathroom	2.4m x 1.4m
Total	71.6m²
	771sqft



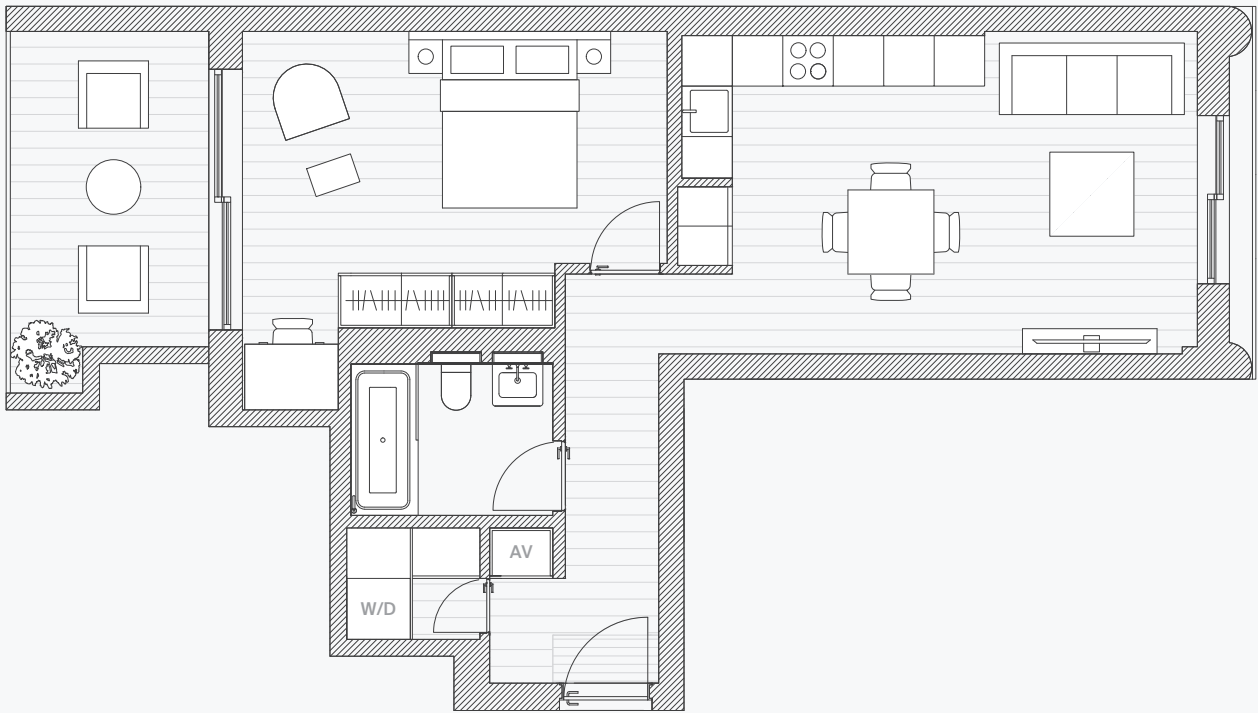
Apartment A105 1 bedroom



First floor



Living/Kitchen/Dining	6.1m x 3.8m
Master Bedroom	5.1m x 3.5m
Bathroom	2.4m x 1.8m
Total	58.1m²
	625sqft
Terrace	9.3m²
	100sqft



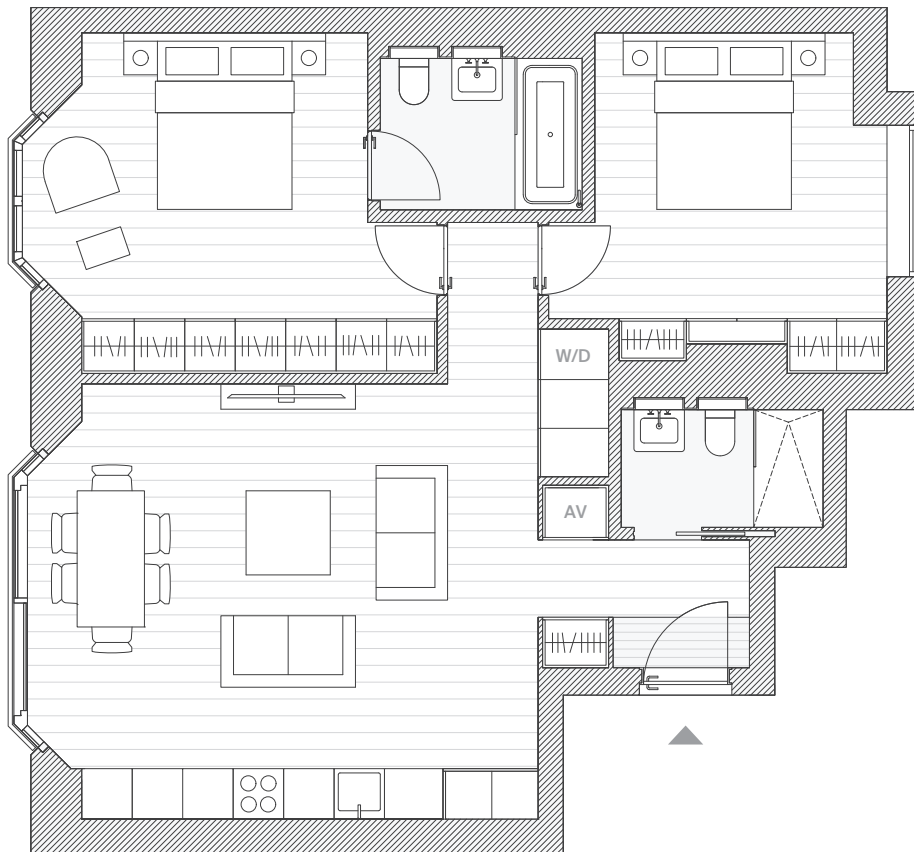
Apartment A201-A701 2 bedroom



Typical floor



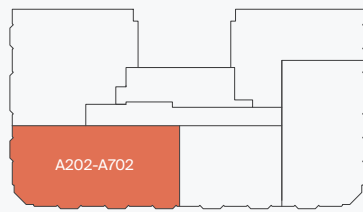
Living/Kitchen/Dining	6.1m x 5.1m
Master Bedroom	4.9m x 4.1m
Master Bathroom	2.4m x 1.8m
Bedroom 2	4.1m x 4.0m
Guest Bathroom	2.4m x 1.4m
Total	83.1m²
	894sqft



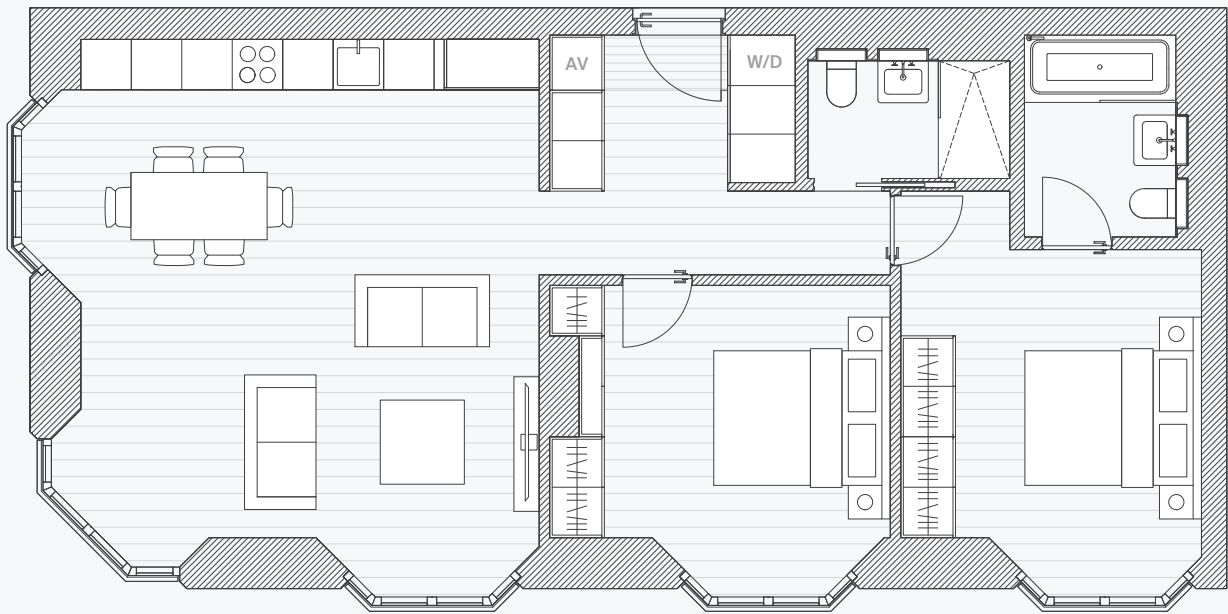
Apartment A202-A702 2 bedroom



Typical floor



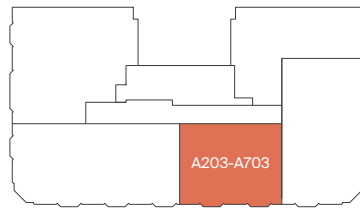
Living/Kitchen/Dining	6.6m x 6.2m
Master Bedroom	4.8m x 3.6m
Master Bathroom	2.4m x 1.8m
Bedroom 2	4.1m x 3.7m
Guest Bathroom	2.4m x 1.4m
Total	86m²
	926sqft



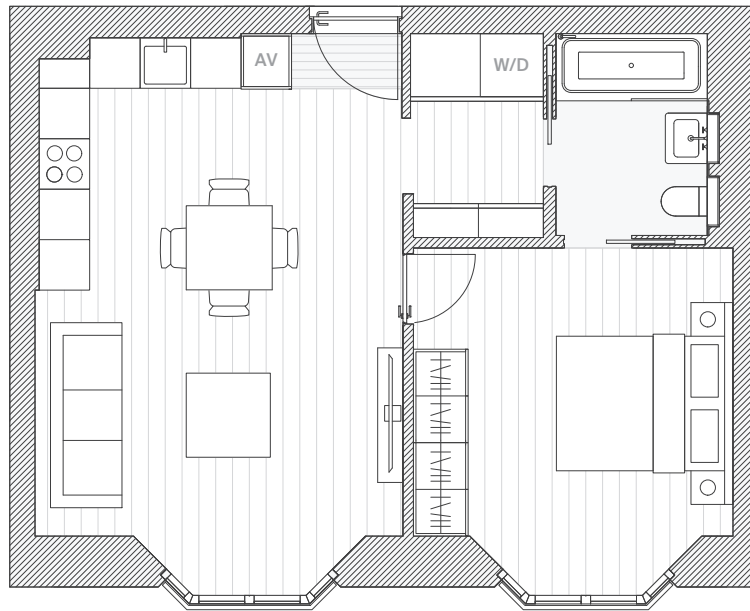
Apartment A203-A703 1 bedroom



Typical floor



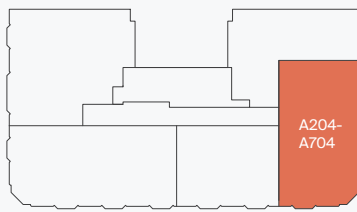
Living/Kitchen/Dining	6.6m x 4.4m
Master Bedroom	4.1m x 3.8m
Guest/Master Bathroom	2.4m x 1.8m
Total	52.5m²
	565sqft



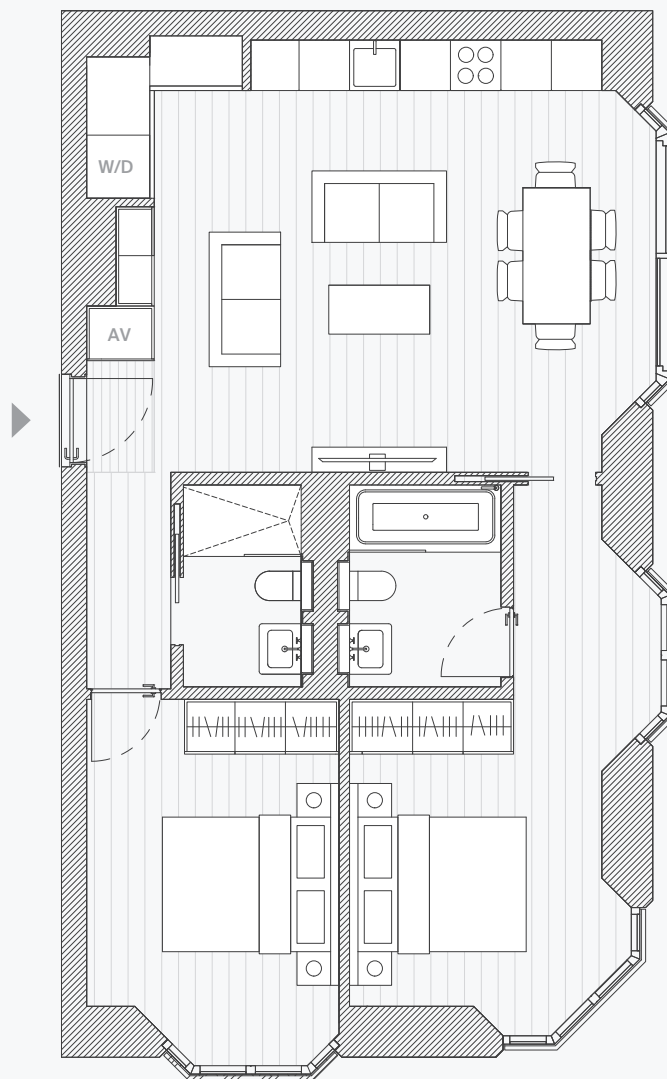
Apartment A204-A704 2 bedroom



Typical floor



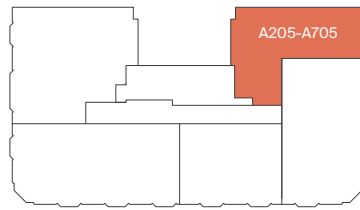
Living/Kitchen/Dining	6.8m x 5.2m
Master Bedroom	6.5m x 3.7m
Master Bathroom	2.4m x 1.8m
Bedroom 2	4.4m x 3.0m
Guest Bathroom	2.4m x 1.4m
Total	76.7m ²
	826sqft



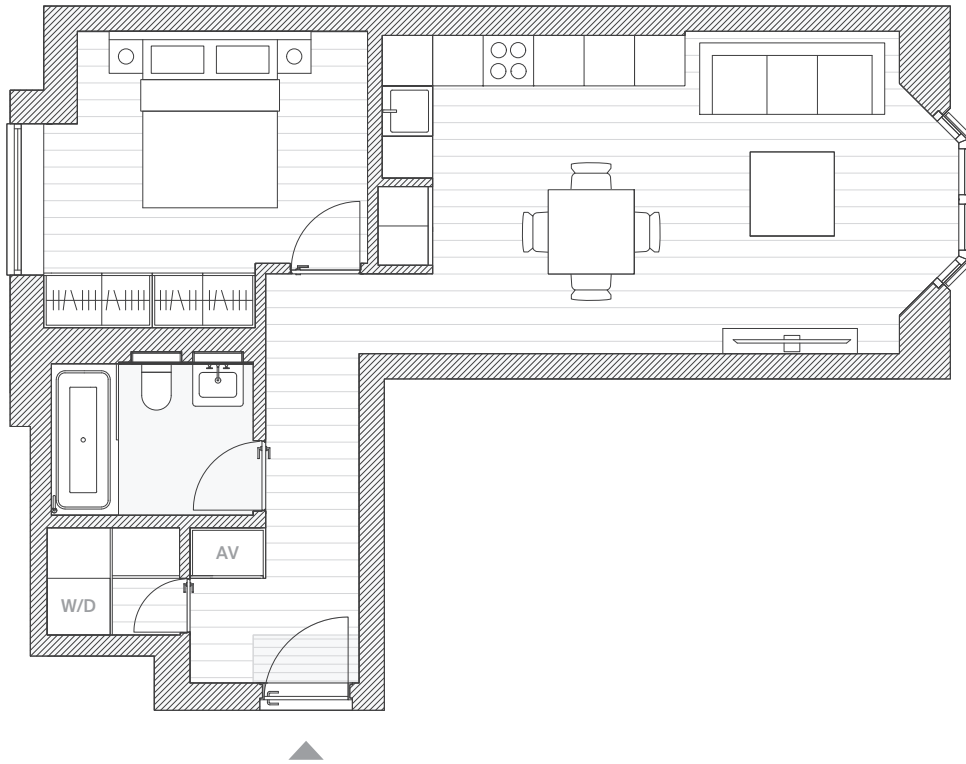
Apartment A205-A705 1 bedroom



Typical floor



Living/Kitchen/Dining	6.9m x 3.8m
Master Bedroom	3.9m x 3.5m
Bathroom	2.4m x 1.8m
Total	54.2m²
	583sqft



Penthouse

Apartment A801 3 bedroom



Eighth floor



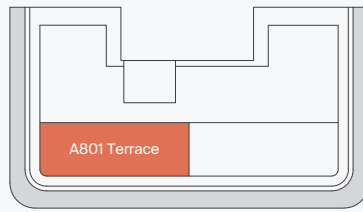
Living/Kitchen/Dining	7.8m x 6.3m
Master Bedroom	4.7m x 3.6m
Master Bathroom	3.5m x 1.8m
Master Wardrobe	3.5m x 2.4m
Bedroom 2	3.6m x 3.2m
Bedroom 3	3.9m x 3.5m
En-suite	2.4m x 1.4m
Guest Bathroom	2.4m x 1.4m
Total	142.5m ²
	1534sqft
Terrace	26.6m ²
	286sqft



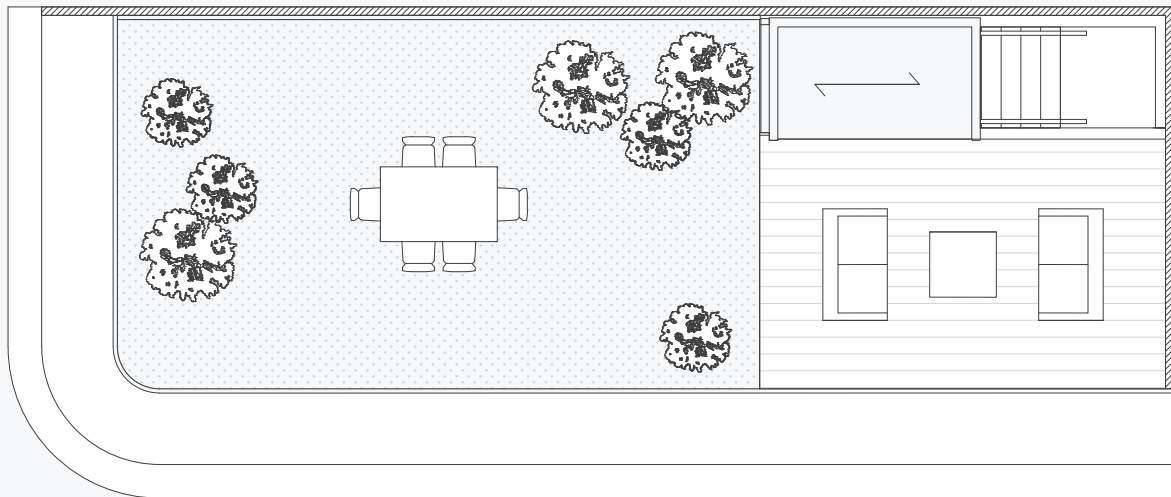
Apartment A801 Roof Terrace



Roof plan



Roof Terrace	12.5m x 4.4m
Total	55.3m²
	596sqft

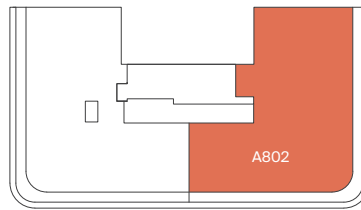


Apartment A802

3 bedroom



Eighth floor



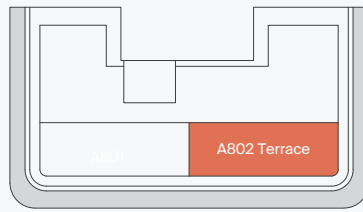
Living/Kitchen/Dining	7.8m x 6.3m
Master Bedroom	4.7m x 3.9m
Master Bathroom	3.5m x 1.8m
Master Wardrobe	3.6m x 2.4m
Bedroom 2	3.6m x 3.2m
Bedroom 3	3.9m x 3.5m
En-suite	2.4m x 1.4m
Guest Bathroom	2.4m x 1.4m
Total	148.6m ²
	1600sqft
Terrace	26.6m ²
	286sqft



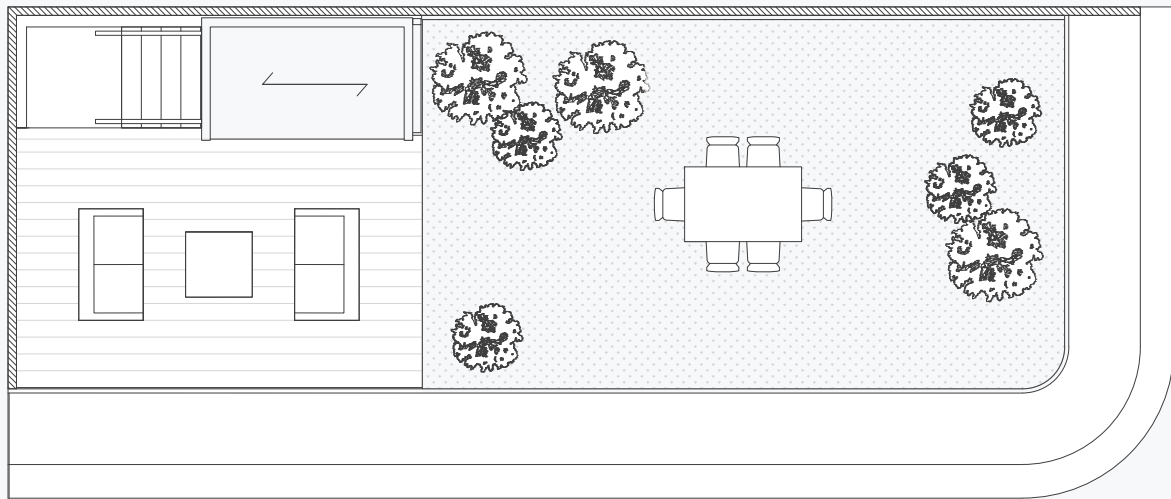
Apartment A802 Roof Terrace



Roof plan



Roof Terrace	12.5m x 4.4m
Total	55.3m²
	596sqft



Specification Summary

Apartments

Entrance

- Solid core veneered timber entrance door
- Video entry control system
- Cloak wardrobes by the entrance

Utility closet

- Integrated washing machine and dryer

Living areas

- Engineered oak timber flooring
- Full height windows
- Full height timber doors
- Fan coil unit comfort cooling and ventilation
- Under floor heating
- Wall washers down lights and provision for fixture above the dining area
- 5 amp lighting sockets to living rooms and master bedrooms
- Stainless steel ironmongery

Kitchen

- Engineered oak timber flooring
- Luxury contemporary kitchen featuring stone work tops
- Under mounted stainless steel double sink
- Integrated oven, induction hob, microwave and dishwasher
- Integrated fridge/freezer and glass-fronted wine fridge
- Segregated waste storage

All bedrooms

- Engineered oak timber flooring
- Full height floor to ceiling wardrobes with integrated shelving and hanging rails
- Under floor heating
- Fan coil unit comfort cooling and ventilation

Juliette balconies

- Brass coloured signature cast aluminium balustrades
- Triple glazed full height windows

Terraces

- Ceramic decking floor
- External lighting

Bathrooms

- Under mounted white bath with shower and shower screen or walk in shower with overhead and hand shower heads; full height porcelain surrounds
- Wall mounted basin
- Dual flush WC with concealed cistern
- Porcelain floor tiling
- Stainless steel mixers, taps and showers
- Mirror fronted wall cabinets with wall lights; interiors fitted with shelving
- Heated stainless steel towel rails
- Under floor heating
- Cove lighting to the showers and bath walls
- Extractor system
- Double wall mounted basin and larger wall cabinet on penthouse master bathrooms

Systems

- Stand-alone system of interlinked smoke alarms, mains operated with battery back-up
- AV cabling infrastructure for IT and TV distribution
- High speed fibre optic connection infrastructure directly into each apartment for data/telephone
- Home automation system with controllable touch panels/push buttons where applicable
- Lighting control system where applicable
- Wiring for Sky Q in equipment cupboard with outlets in each room
- Wiring for control point with KNX panel

DEVELOPER

204 GP Street (Jersey) Ltd
c/o Volaw Group
37 Esplanade
St. Helier
Jersey JE1 2TR
w1.place

DEVELOPMENT MANAGER

Concord London Ltd.
50 Bolsover St, Marylebone
London W1W 5NG
concord-london.com

ARCHITECT

E8 Architecture
E8 Design Ltd,
1 Mentmore Terrace,
London E8 3PN
e8architecture.co.uk

BOOK DESIGN

Winkreative

Common Areas

Reception

- Entrance canopy
- Concierge
- Granite floor
- Feature glass wall panelling

Lifts

- Two passenger lifts
- Stone floor matching entrance lobby and brushed stainless steel doors

Core and corridors

- Engineered oak timber flooring to residential corridor floors

The developer reserves the right to make modifications and changes to the project including but not limited to architectural, interior and external features and finishes, brands, colours, materials, building design, specifications, ceiling heights, flooring patterns and floor plans without notification.

